

4A112M4-024-001

Use

Num. 3

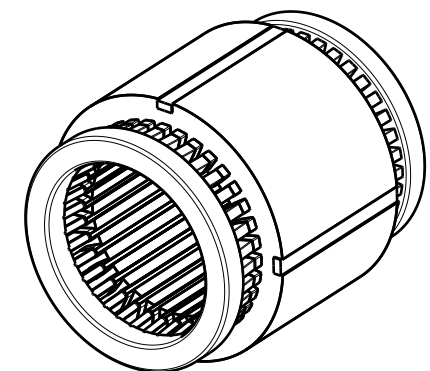
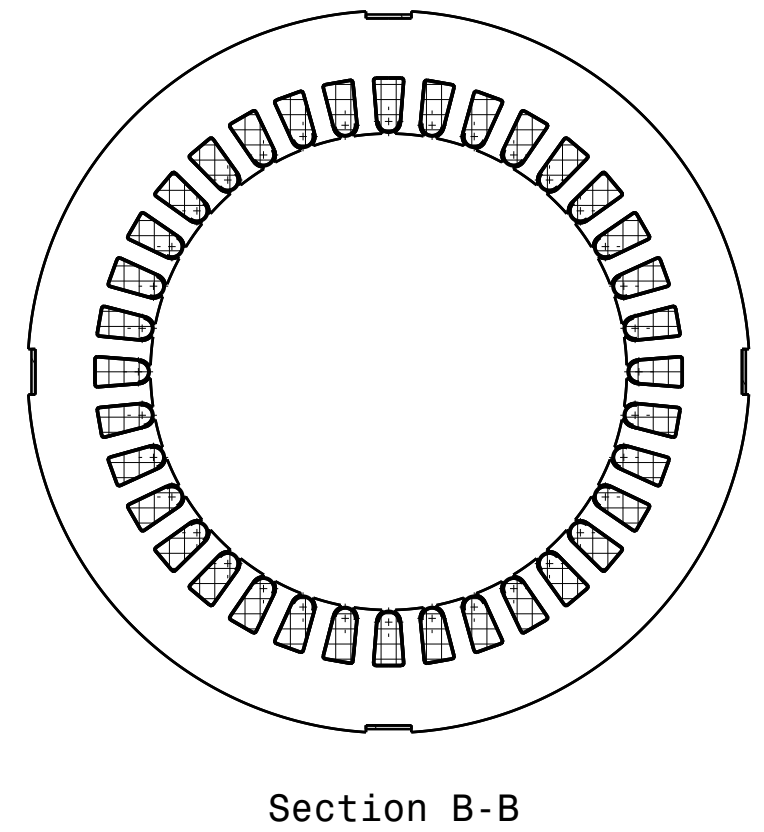
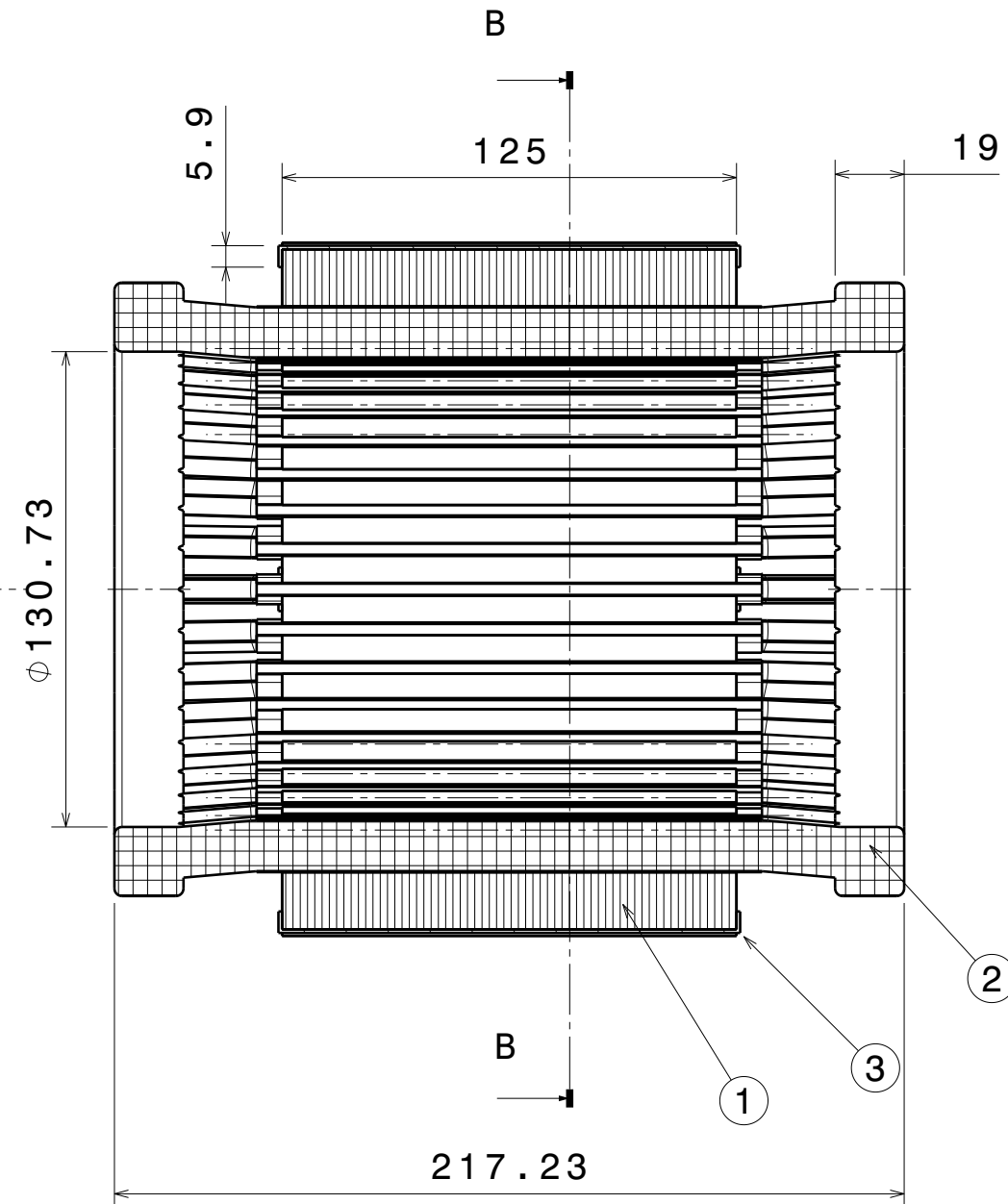
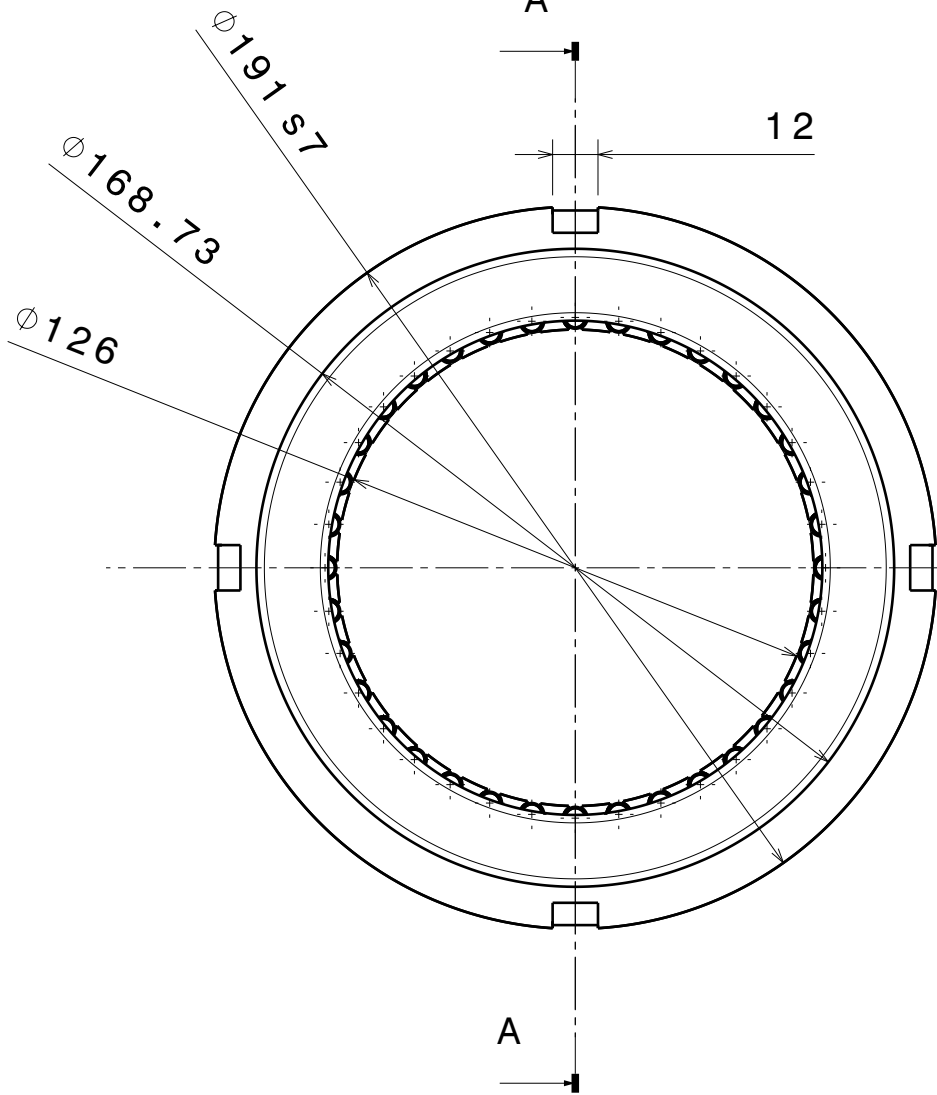
Sign. & date

Num. 2

Num. 1

Sign. & date

Num.



Scale 1:5

Section A-A

Section B-B

If not specified, tolerance of +/-0.1mm must be used.  
 Sharp edges must be removed.  
 This drawing cannot be reproduced or communicated without written agreement of Dr. A.Pulnikov.

Copper wire: 3.59kg, Varnish: 0.241kg  
 Number of winding layers: 1, Number of parallel branches: 1

Item	Qty	Unit	Part-No	Description	Remarks
1	12.1	kg	4A112M4-021-001	Stator lamination stack	Steel-2013
2	3.83	kg	4A112M4-023-001	Stator winding	Y connection
3	4	pc		Brackets	Steel

Mod	Sh.	N. doc	Sign.	Date
		Pulnikov		17/06/2020
Design				
Checked				
Control				
Depart.				
Control				
Appr.				

4A112M4-024-001			
Let	Weight	Scale	
	15.9	1:2	
Sheet 1	Sheets 1		
-			
Pulnikov EC			