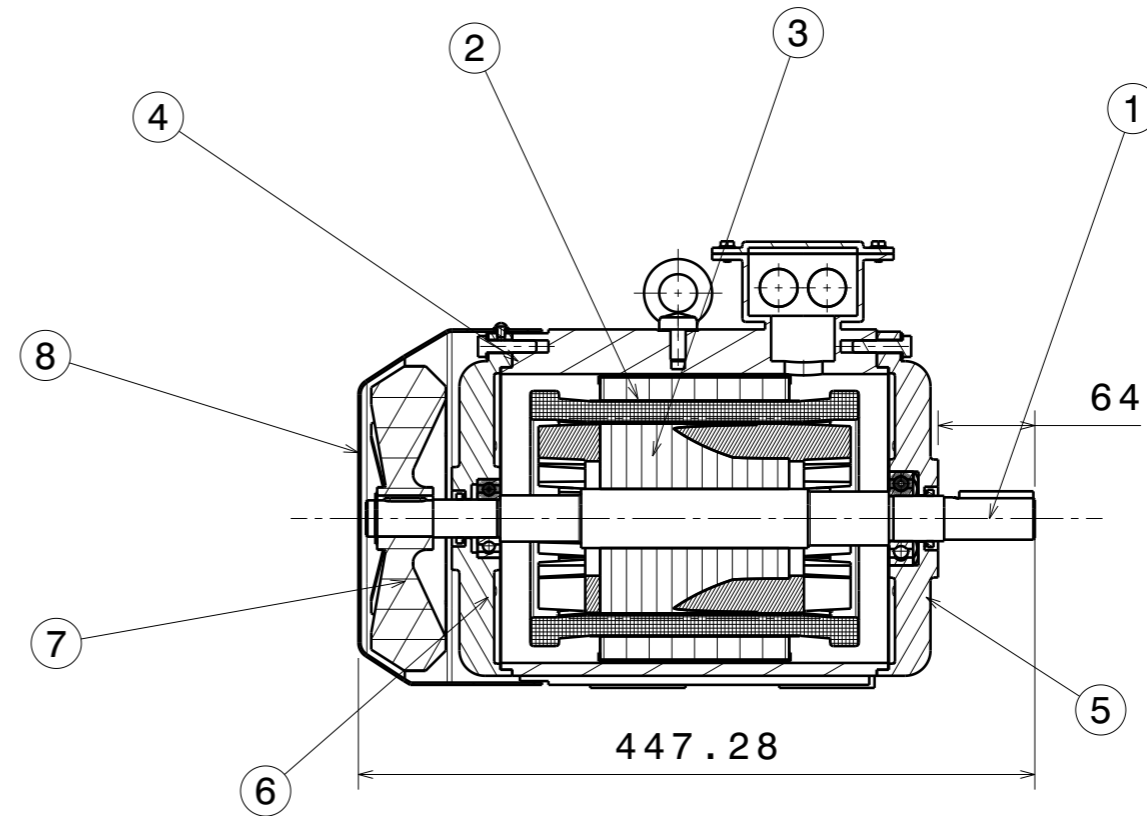
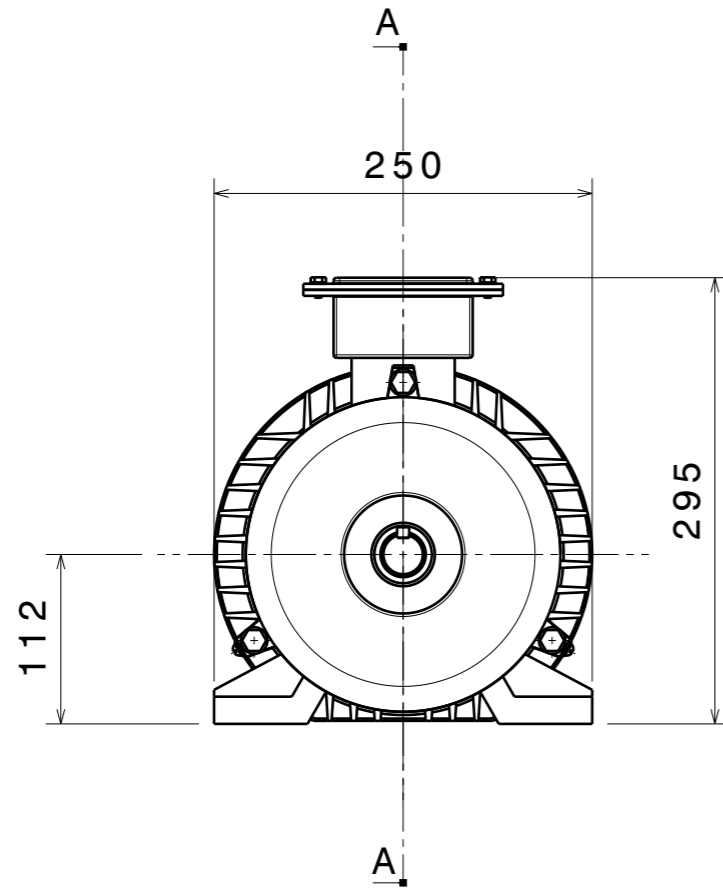
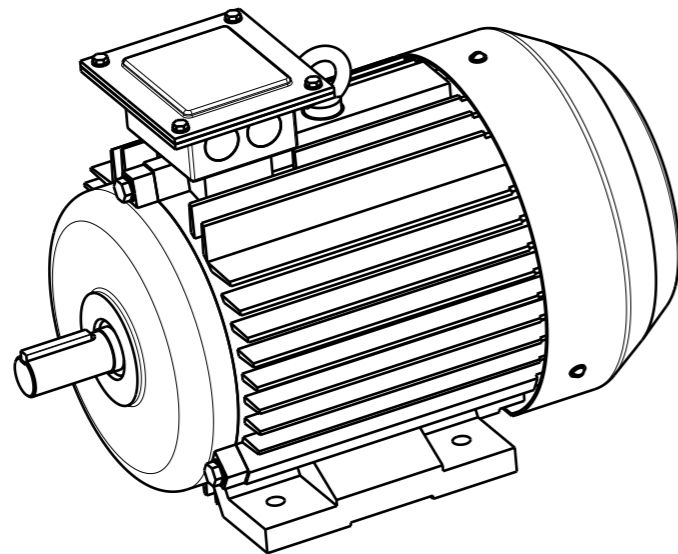


4A112M4-100-001



Section A-A



Item	Qty	Unit	Part-No	Description	Remarks
1	2.98	kg	4A112M4-010-001	Shaft	
2	15.9	kg	4A112M4-024-001	Stator	
3	9.83	kg	4A112M4-013-001	Rotor	
4	22	kg	4A112M4-030-001	Housing	
5	1.25	kg	4A112M4-031-001	Bearing shield drive side	
6	3.58	kg	4A112M4-032-001	Bearing shield fan side	
7	1.39	kg	4A112M4-033-001	Fan	
8	1.28	kg	4A112M4-034-001	FanCover	

If not specified, tolerance of +/-0.1mm must be used.

Sharp edges must be removed.

This drawing cannot be reproduced or communicated without written agreement of Dr. A.Pulnikov.

				4A112M4-100-001				
				Asynchronous motor assembly		Let	Weight	Scale
Mod	Sh.	N. doc	Sign.			Date		58.7
Design		Pulnikov	6/17/2020			Sheet 1	Sheets 1	
Checked						Pulnikov EC		
Control								
Depart.								
Control						Different materials		
Appr.								

Inertia of the rotating parts of the motor: 0.023kg*m²

Axis height: 112mm, Power: 5.5kW

Use

B

Num. 3

A

Sign. & date

Num. 2

Num. 1

Sign. & date

Num.