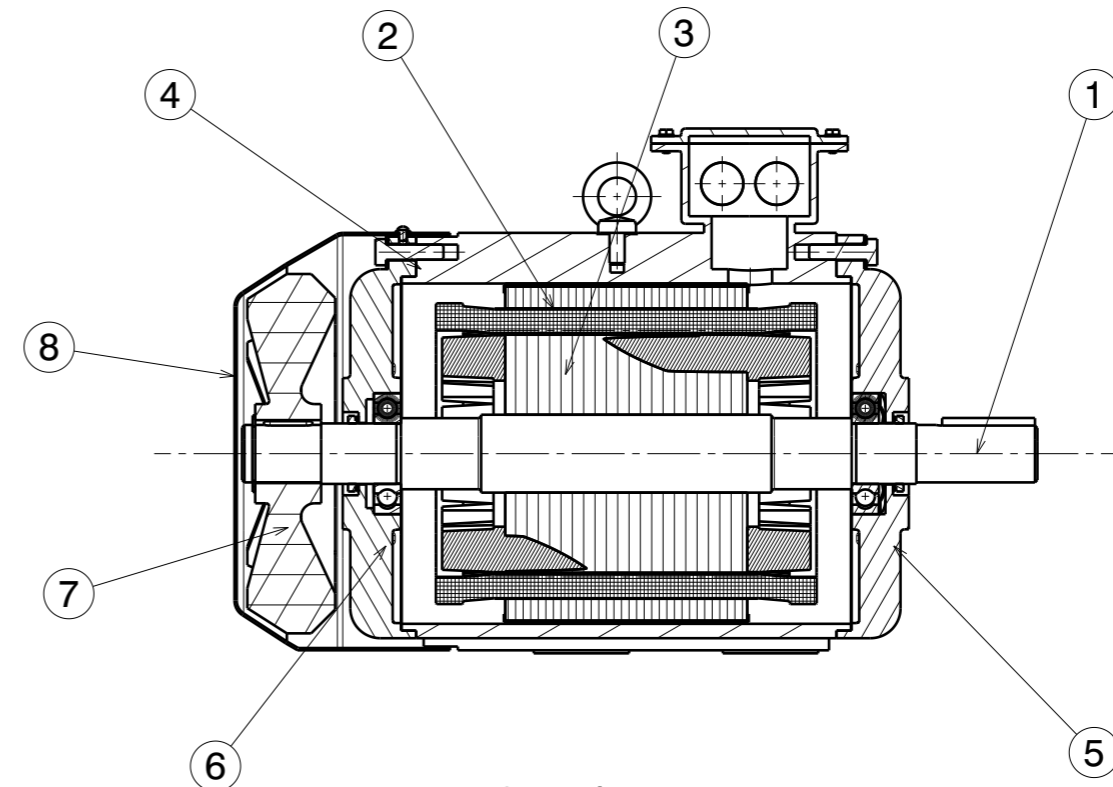
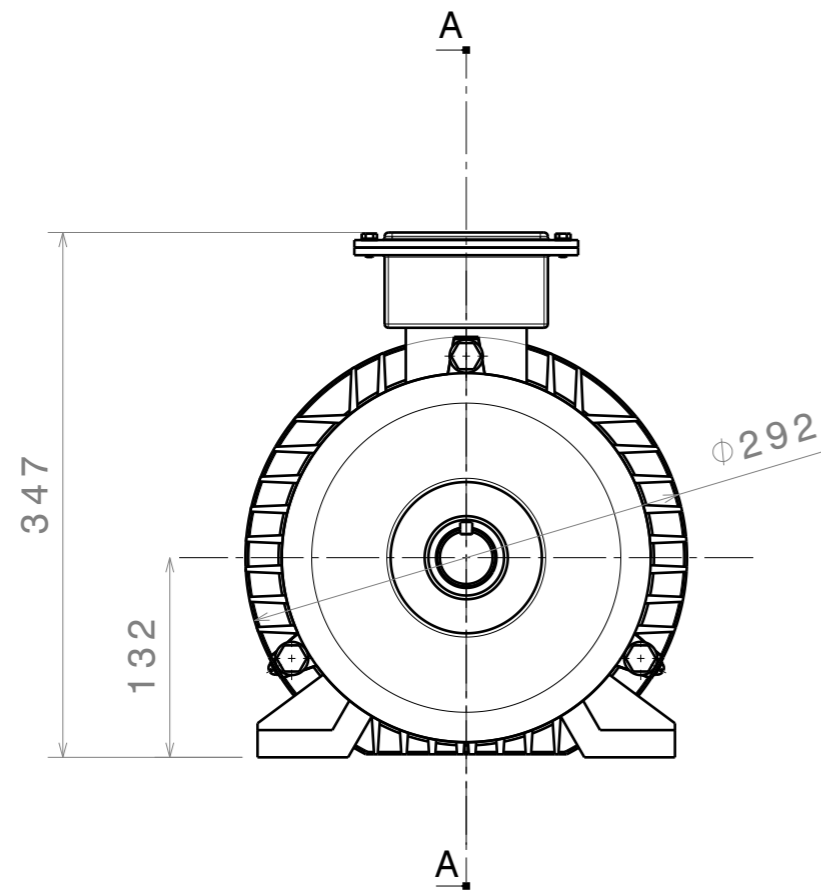
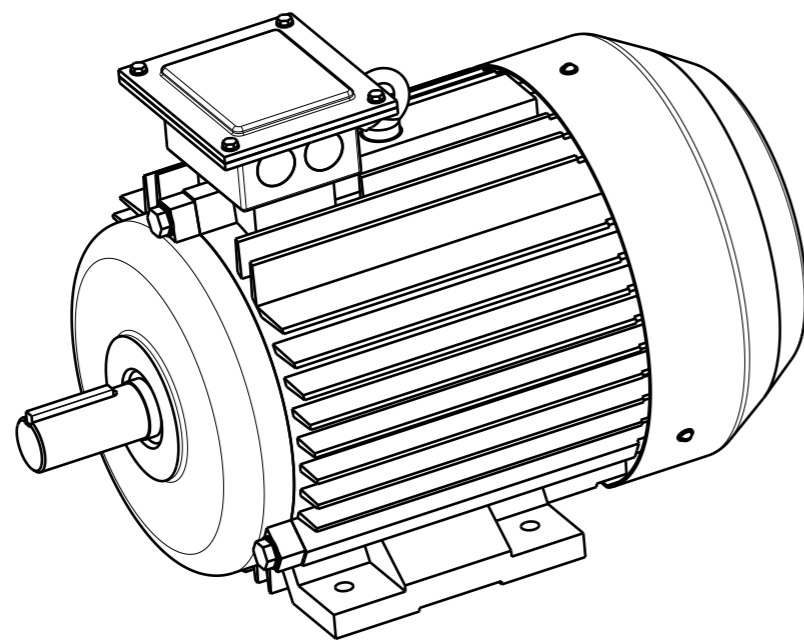


4A132M6-100-001



Section A-A



Item	Qty	Unit	Part-No	Description	Remarks
1	6.73	kg	4A132M6-010-001	Shaft	
2	24.7	kg	4A132M6-024-001	Stator	
3	19.6	kg	4A132M6-013-001	Rotor	
4	32	kg	4A132M6-030-001	Housing	
5	2.1	kg	4A132M6-031-001	Bearing shield drive side	
6	6.21	kg	4A132M6-032-001	Bearing shield fan side	
7	2.22	kg	4A132M6-033-001	Fan	
8	1.76	kg	4A132M6-034-001	FanCover	

If not specified, tolerance of +/-0.1mm must be used.

Sharp edges must be removed.

This drawing cannot be reproduced or communicated without written agreement of Dr. A.Pulnikov.

					4A132M6-100-001			
					Asynchronous motor assembly	Let	Weight	Scale
							96.1	1:1
Mod	Sh.	N. doc	Sign.	Date	Different materials		Sheet 1 Sheets 1	
Design		Pulnikov	6/17/2020					
Checked								
Control								
Depart.						Pulnikov EC		
Control								
Appr.								

Inertia of the rotating parts of the motor: 0.07kg*m²

Axis height: 132mm, Power: 7.5kW

Use

Num. 3

B

A

Sign. & date

Num. 2

Num. 1

Sign. & date

Num.